

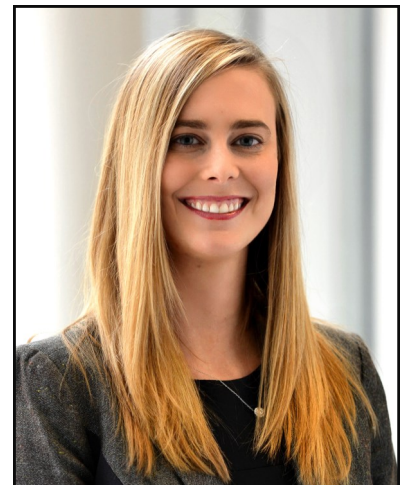


Special Grand Rounds Lecture

Heuristics & Biases in Medical Decision Making and Implications for Consent

Jennifer Blumenthal-Barby, PhD

Cullen Associate Professor of Medical Ethics
Associate Director of Medical Ethics
Center for Medical Ethics and Health Policy
Baylor College of Medicine



Thursday, March 9, 2017

12:00—1:00 p.m.

Building 55, #212

Human decision making is plagued by various “cognitive biases” and heuristics that can lead to suboptimal decision making. This talk will outline some of these biases and give examples of how they can impact patients’ decision making in negative ways. Patients may not be engaging in “informed” and “autonomous” decision making as much as we like to think. This opens up the possibility of using knowledge of some of these biases to shape the informed consent process—an idea that raises ethical issues.

Dr. Blumenthal-Barby's research focuses on the ethical issues raised by research on human judgment and decision-making (e.g., decisional biases and heuristics). She focuses on developing moral guidelines for the use of principles of behavioral economics and decisional psychology to shape people’s decisions and behaviors. Dr. Blumenthal-Barby has been the recipient of a Greenwall Faculty Scholar in Bioethics Fellowship, a Pfizer Bioethics Fellowship, and a Patient Centered Outcomes Research Institute (PCORI) Award. She directs the undergraduate medical education ethics curriculum at BCM, teaches courses and advises graduate students in ethics at Rice University, and co-directs the Rice-BCM Health, Humanism and Society Scholars Program for undergraduates. She has published more than 65 articles in bioethics, philosophy, and medical journals and won several teaching awards.

The seminar is free and open to the public. Lunch provided.